

LOCOSYS GW-60

Quick Start Guide



Alarm status



Blinking: searching for GPS

Steady on: GPS is ready



Battery level



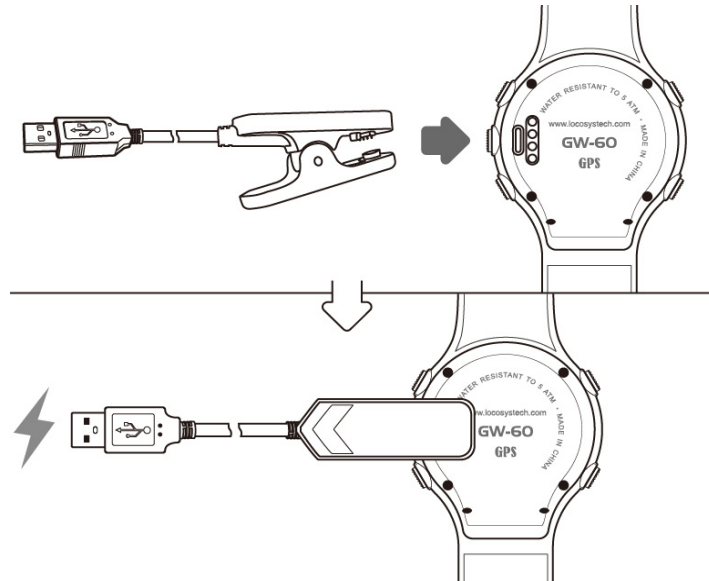
Charging



Full charge

Section 1. Brief Introduction

- 1.1** Before operating your GW-60, clip the device and full-charge it with **DC +5V/500mA** charger for at least 3~4 hours.



- 1.2** Press **MODE/BACK** to select Time modes
(1) CLOCK; (2) ALARM; (3) STOPWATCH; (4) TIMER



- 1.3** Press **ADJUST/←** to setting page.



- 1.4** Press **GPS** to GPS mode. GPS signal will be searched automatically.



1.5 Backlight: Hold **MODE/BACK** for 2 sec.

(Press any key to extend backlight time)



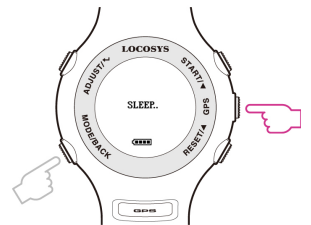
1.6 Lock screen: **START+MODE**, press again to unlock.



1.7 Sleep mode: Hold **GPS** for 1 sec to sleep mode.

At clock mode, GW-60 will turn to sleep mode in 15sec.

Tip: Press **MODE/BACK** to wake up the watch.



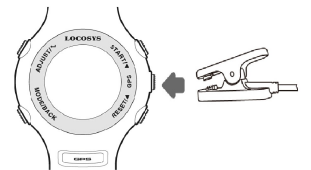
1.8 Deep sleep mode: Optimized power saving function.

GW-60 will enter deep sleep mode around 10 days

without using.

At deep sleep mode, GW-60 **cannot** be turned on by

pressing **MODE/BACK** button.



Note: Please wake up GW-60 by connecting USB cable

before your ride.

Section 2. Time Mode

2.1 Clock Mode

Display local time based on the GMT setting.

Tip: Quick clock time setup for first time usage.

(1) GMT Setting: Refer to 3.8

(2) GPS Time Synchronization: Under open sky environment, switch to **GPS** mode and wait until there is GPS fix. GW-60 will automatically synchronize to precise GPS UTC time.



2.2 Alarm Mode

- Press **ADJUST**/**↵** to adjust alarm time.
- Press **▲** / **▼** button to select numbers and **ADJUST** / **BACK** to start/end adjustment.



2.3 Stopwatch Mode

- Press **START** to start counting time and press again to pause.
- Press **RESET** to reset counting time to "00:00".
- Press **MODE/BACK** to exit.



2.4 Timer Mode

- Press **ADJUST** to start adjusting timer.
- Press **▲** / **▼** to change numbers and **MODE/BACK** button to end adjustment.
- Press **START** to start counting down and press again to pause.
- Press **RESET** to restart timer



Section 3. Setting

3.1 Setting page:

ADJUST/←↓: Enter edit mode/ Confirm.

▲: Up.

▼: Down.

MODE/BACK: Exit edit mode/ Cancel.



3.2 **RESET DISP**: Command to clear top speed records or traveled distance.

ALL

DISTANCE

5#NSEC

TOP RSLT



3.3 **AUTO SLEEP**: If enabled, the GW60 will go into sleep mode(LCM off) to save power if there is no key pressed for 15 seconds in “TIME NOW” SCREEN.

Hold “GPS” key for 2 seconds to go to sleep mode

Hold “BACK” key for 2 seconds to exit sleep mode

O: On/ Enable

X: Off/ Disable



3.4 **BUZZER**: set buzzer/ sound.

O: On/ Enable

X: Off/ Disable



3.5

LOGGING: Log rate setting.

OFF : No logging.

1HZ : When speed over [MIN SPEED], log rate in 1HZ.

5HZ : When speed over [MIN SPEED], log rate in 5HZ.

SMART:

When speed over [MIN SPEED] but less than [SPD GENIE], 1 HZ log rate.

When speed over [MIN SPEED] but more than [SPD GENIE], 5 HZ log rate.

Note: This saves memory at low speed and gives more precious data where it's needed, but some software uses changes in log rates as an error filter. This may cause alphas to be rejected if log rate changes during the gybe.

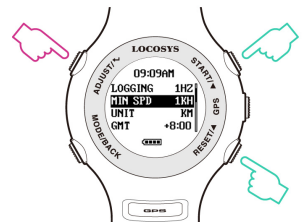


3.6

MIN SPEED (MIN SPD): Speed threshold, only logged speed above [MIN SPEED].

Available number: 0 to 15 [UNIT].

Sets the speed when logging starts. Under [MIN SPEED] there is no logging.



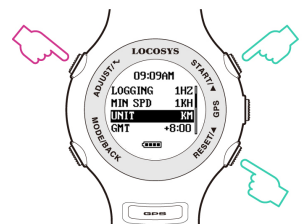
3.7

UNIT: Speed measurement unit.

KM : Kilometer.

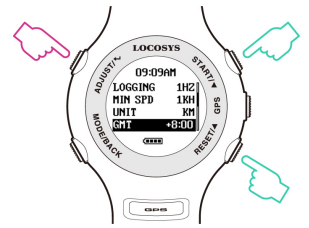
MI : Mile.

NM : Nautical mile.



3.8 **GMT:** Set GMT/Time zone, e.g. +8:00 for Taipei.

Available number: GMT-12:00 to GMT+13:00.



3.9 **AVG NSEC:** Time interval for speed averaging.

Available value: 1 sec to 60 sec.

Default 10 seconds



3.10 **AVG MSEC:** Time interval for speed averaging.

Available value: 1 sec to 60 sec.

Default 2 seconds

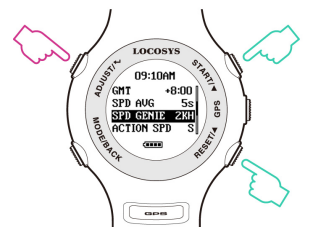


3.11 **SPEED GENIE (SPD GENIE):** Auto-speed report, setting the minimum speed threshold to initiate [SPD GENIE].

Note: For alphas [SPD GENIE] needs to be set below the minimum gybe speed.

For speed runs, set lower than the downwind speed but higher than the upwind speed.

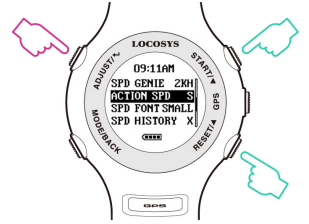
Available number: 0 to 63 [UNIT].



3.12

ACTION SPEED (ACT SPD): Speed display type

- ◆ SPEED : Current speed (200ms average)
- ◆ MAX: maximum speed
- ◆ NSEC: N-second average speed(N=[AVG NSEC])
- ◆ MSEC: M-second average speed(M=[AVG MSC])
- ◆ &500: Alpha 500 meter run
- ◆ 100M:100 meter run
- ◆ 250M: 250 meter run
- ◆ 500M: 500 meter run



3.13

RSLT1A~RSLT4B: Speed result selection options

(Screen 1~4).

These are 4 speed genie windows which scroll once speed goes above and then under [SPD GENIE] setting.

Each window has two sub-screens: A(top half) and B(bottom half).

Each window has two possibilities, a split screen showing two results in small font, or a single display of one result in big font.

To achieve the big font single display set A and B to the same category (speed type) for that screen number.

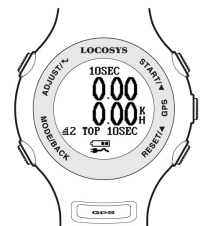
To achieve the split screen set A and B to different categories for that screen number.

Each screen can assign one or two of the following speed types:

Example:



RSLT1A/1B



RSLT2A/2B



RSLT3A/3B

- ◆ MAX: maximum speed
- ◆ NSEC: N-second average speed(N=[AVG NSEC])
- ◆ MSEC: M-second average speed(M=[AVG MSC])
- ◆ &500: Alpha 500 meter run
- ◆ 100M:100 meter run
- ◆ 250M: 250 meter run
- ◆ 500M: 500 meter run
- ◆ TOP (RSLT1B~RSLT4B): history max speed
- ◆ X (RSLT3B~RSLT4B): screen disabled
- ◆ Speed result setting example:

RSLT1A=MSEC	RSLT1B=TOP
RSLT2A=NSEC	RSLT2B=TOP
RSLT3A=&500	RSLT3B=TOP
RSLT4A=MAX	RSLT4B=X
RSLT DIST=0	RSLT TIME=0
AVG NSEC= 10S	AVG MSEC=2S



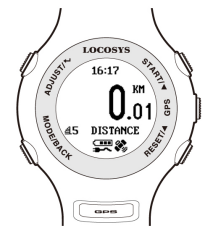
RSLT4A/4B

3.14

RSLT DIST: Option to include "DISTANCE" screen in speed result report (Screen 5).

O: On/ Enable

X: Off/ Disable



3.15

RSLT TIME: Option to include "TIME" screen in speed result report (Screen 6).

O: On/ Enable

X: Off/ Disable

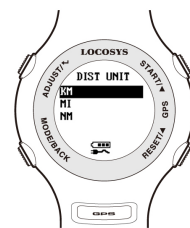


3.16 **DIST UNIT:** Distance measurement unit.

KM: Kilometer.

MI: Mile.

NM: Nautical mile.



3.17 **SCROLL:** Set scroll seconds in speed report

Available number: 1 sec to 2.5 sec.

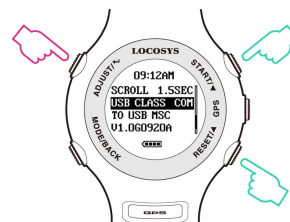


3.18 **USB CLASS:** Connection type

COM: Virtual COM PORT for Windows platform user.

UMS: USB Mass Storage for non-Windows platform user.

(Note: Set UMS before entering “MSC mode” on 3.19)



3.19 **TO USB MSC:** Connection by Mass Storage Class (MSC) mode mainly for non-Windows platform user.

Tip: How to get GPS data in USB MSC mode

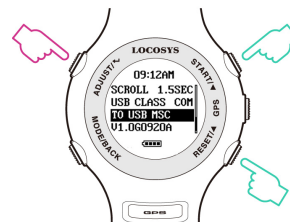
(1) Set “USB CLASS” option to “UMS” first.

(Note: Before setting, the USB charging cable MUST be disconnected.)

(2) Connect to USB, and press **ADJUST/←** “TO USB MSC” to enter USB MSC state.

(3) Find a new flash drive with a READ only file—
GPSLOG.SBP on your host PC.

(4) Remove USB cable to exit.



3.20

SCREEN FLIP: Option to display screen upside down.

X: Off/ Disable

O: On/ Enable

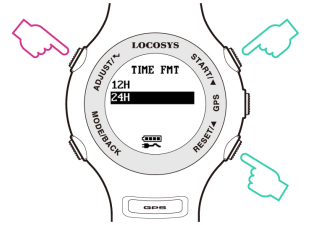


3.21

TIME FMT: Option to select time format for display

12H: AM/PM

24H



3.22

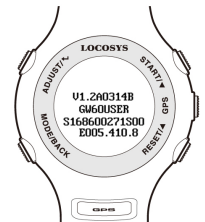
FIRMWARE VERSION: check device status

Firmware Version: VX.XXXXXX

User Name: XXXXXX

Serial Number: SXXXXXXXX

GPS Version: XXXX



Note: In "ACT SPEED" screen, users can access "STOPWATCH" and "TIMER" functions

by pressing "MODE" key

Section 4. GPS Mode

4.1

Action Speed: Display current instant speed or N-sec. average speed.

- Vertical Bar: Log memory usage.
- Horizontal Bar: Speed accuracy indicator.
(Long bar means good signal)
- Symbol ■ :No logging data
- Symbol ►: logging data
- Press ▲ / ▼: scroll to next page or previous page.
- Delete all logging data: In "ACT SPEED" screen, press ADJUST/↵, there will be "DEL LOG?" message to remind the data delete.
- In "ACT SPEED" screen, users can access "STOPWATCH" and "TIMER" functions by pressing "MODE" key. As the timer counts down the progress bar at the top of the screen gets smaller, and when it times out the display reverses colour.



GPS searching



GPS fixed



Delete log data



TIMER



Times up

4.2

5 # NSEC: Display N-second average speed report.

- Press **MODE/BACK**: display in big font
- Press **ADJUST/↵**: Delete all report



Small Font



Big Font

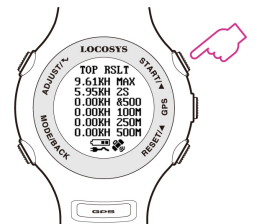


Delete log data

4.3

TOP RSLT: Display top results for each run

- Press **MODE/BACK**: display in big font
- Press **ADJUST/↵**: Delete all report



Small Font



Big Font



Delete log data

4.4 RSLT1~RSLT4: Refer to 3.13 example (P.8-P.9)

4.5 DISTANCE: Display distance traveled when data logging. Refer to 3.13 example (P.9)

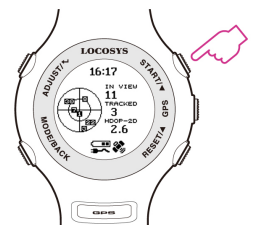
4.6 TIME: Refer to 3.13 example (P.9)

4.7 PVT: Display position, velocity, and time

- Press ▲ / ▼ to next page/ previous page.



4.8 Radar View: Displays the available satellites in a graphical form, numbers of available satellites, tracked satellites and DOP.



4.9 Satellite Signal: Displays the satellite number of tracked, available satellites and the C/No value of each satellite in bar chart.



Section 5. GW-60 PC Utility (Windows platform only)

5.1 Device connection procedure : (Make sure USB driver is installed)

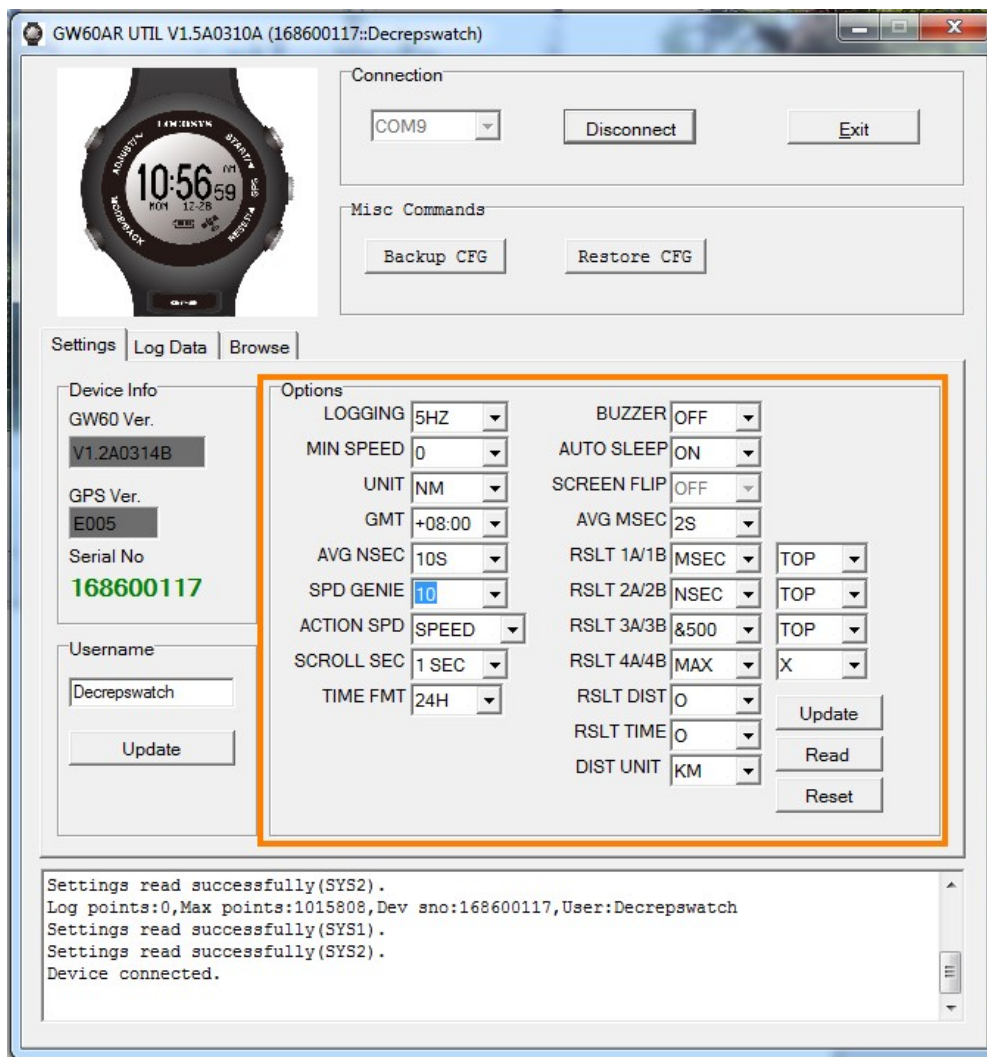
- (1) Select COM port properly.
- (2) Click “Connect” to connect device.

Once the device is connected, the firmware version will be displayed.

(Note: click **“Disconnect”** before unplugging the USB cable.)

5.2 Click **“Settings”** to select setting function page.

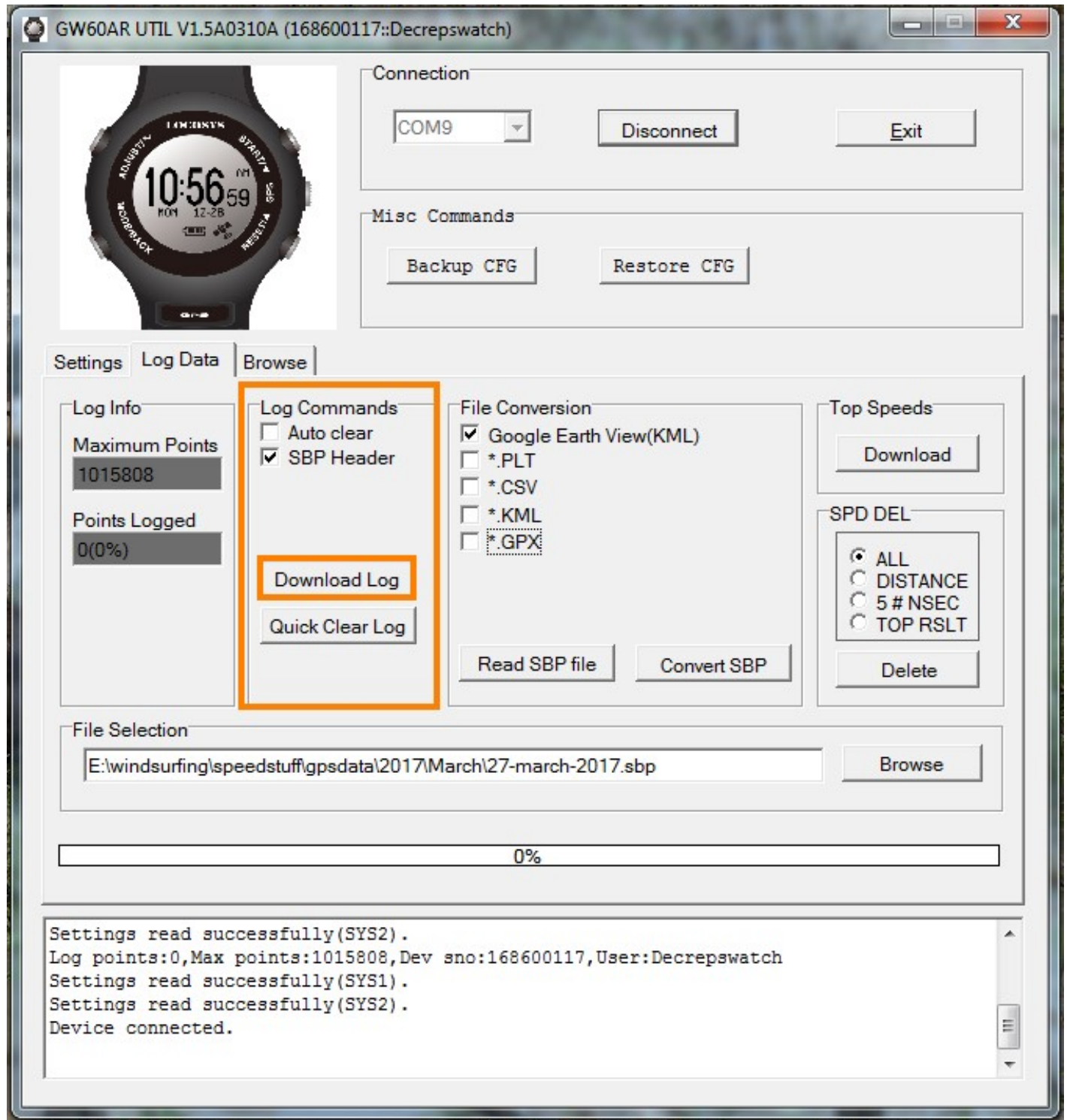
In setting function page, users can change username, UTC offset, log interval….



5.3

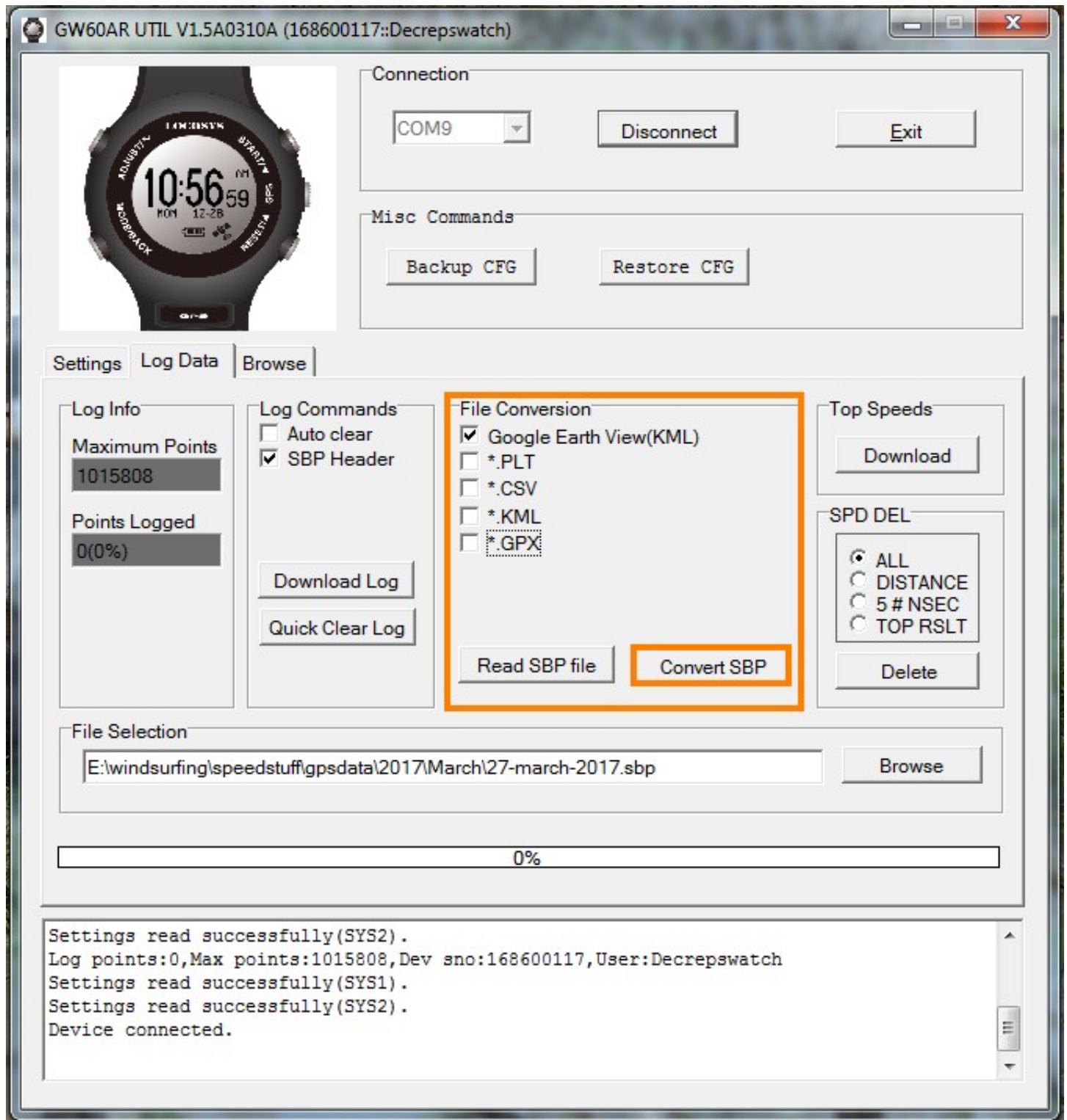
Click “Log Data” to select log function page.

In this page, users can see “Log Info”, and be able to download log data (in SBP format).



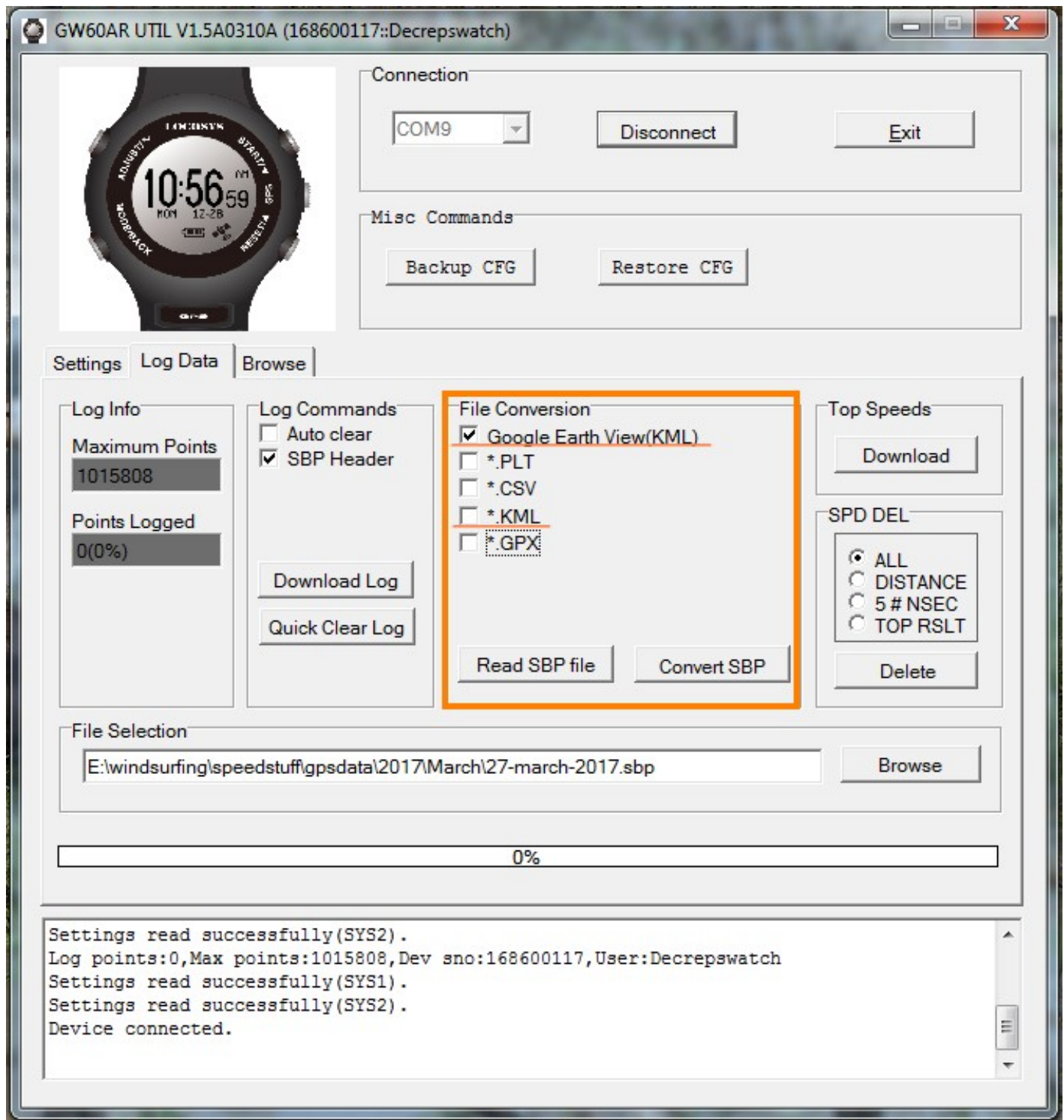
5.4

Click "Convert Log" to convert the SBP file into PLT, CSV, KML and GPX files.
(Check [✓] Google Earth View to see the travel trajectory)



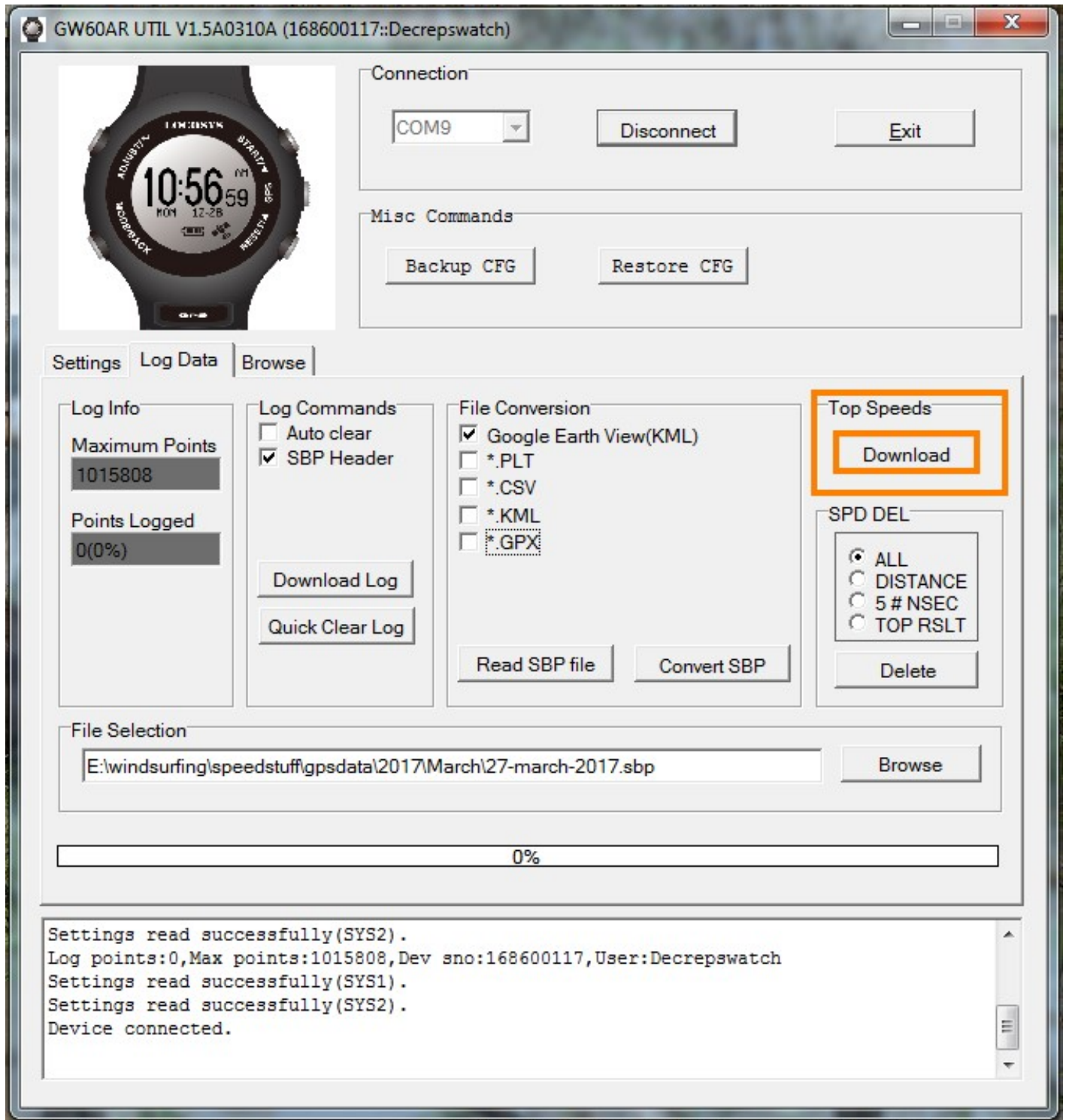
5.5

Click “Google Earth View” to link with Google Earth Viewer.



5.6

Click “Download” to download the TOP 10 Speeds in SBP file.



5.7

Click “Browse” to view logged data.

Click item number to link up Google Map.

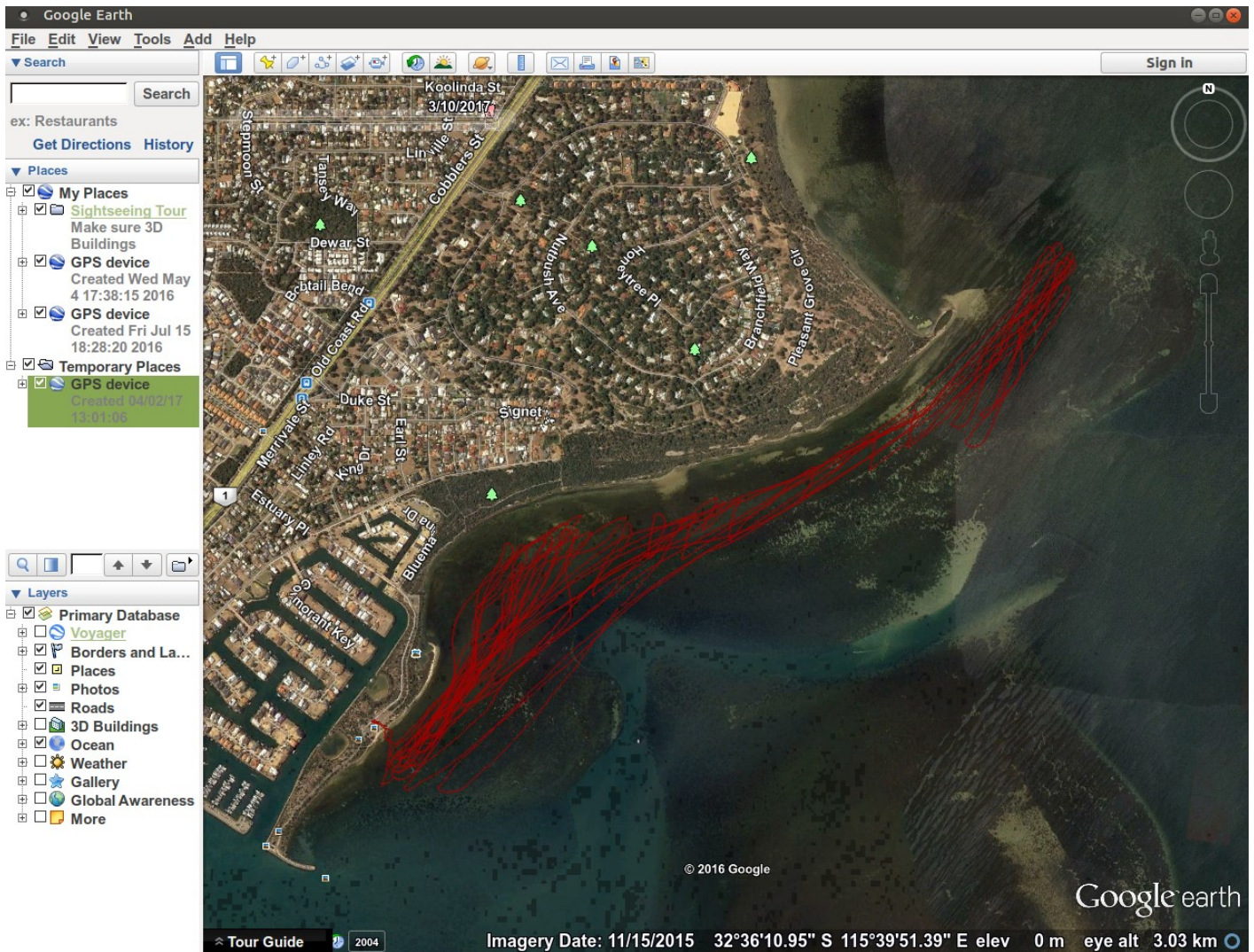
The screenshot shows the GW60AR UTIL V1.5A0310A (168600117::Decrepswatch) application window. It features a watch image on the left, connection controls (COM9, Disconnect, Exit) and misc commands (Backup CFG, Restore CFG) on the right. A central table displays logged data with columns for item number, speed, altitude, distance, time, and coordinates. An orange box highlights item 4216, with an arrow pointing to it and the text "Click to link up Google Map". A status bar at the bottom shows file loading progress and statistics.

Item	Speed	Altitude	Distance	Time	Coordinates	Altitude	Item
4215	0.8	10	600	2017-03-26 02:39:00	571a-326088872	1156697248	-883 1162
4216	0.8	10	800	2017-03-26 02:39:00	571a-326089060	1156697364	-883 1153
4217	0.8	10	1000	2017-03-26 02:39:00	571a-326089246	1156697481	-883 1176
4218	0.8	10	1200	2017-03-26 02:39:00	571a-326089431	1156697603	-883 1157
4219	0.8	10	1400	2017-03-26 02:39:00	571a-326089615	1156697730	-883 1181
4220	0.8	10	1600	2017-03-26 02:39:00	571a-326089798	1156697858	-883 1158
4221	0.8	10	1800	2017-03-26 02:39:00	571a-326089978	1156697989	-883 1192
4222	0.8	10	2000	2017-03-26 02:39:00	571a-326090159	1156698127	-853 1184
4223	0.8	10	2200	2017-03-26 02:39:00	571a-326090340	1156698265	-853 1198
4224	0.8	10	2400	2017-03-26 02:39:00	571a-326090522	1156698405	-853 1207
4225	0.8	10	2600	2017-03-26 02:39:00	571a-326090706	1156698546	-883 1205
4226	0.8	10	2800	2017-03-26 02:39:00	571a-326090888	1156698683	-883 1197
4227	0.8	10	3000	2017-03-26 02:39:00	571a-326091071	1156698819	-883 1197

```
Loading SBP file E:\windsurfing\speedstuff\gpsdata\2017\March\26-march-liptons-watch.sbp ...
Parsing SBP records...
SBP file loaded
Total SBP file size=2855168, points=89224, cks=311406436
```


5.8

Click the SBP record in the browse page to view the point on Google Map.
Or, to view the converted GPX and KML files on Google Earth.



Section 6. Maintenance & Support service

All GW-60 go through inspections before users have it. In this section, we will explain how to prevent the malfunctions, and how to care for the watch.

1. Do not operate buttons under water.
2. Do not operate the device in extreme temperatures.
3. To avoid the pogo pins getting rusty, and affecting the function of charging and connection to PC or laptop, after using the device:

- 1) Wash it lightly in tap water
- 2) Wipe all moisture with a dry cloth, and cotton buds clean the water on pogo pins
- 3) Allow it air dry.



Pogo pins

Rusty pogo pins

4. Do not clean the device with spray cleaners, alcohol, thinners, gasoline, organic solvents, aerosol sprays and paint.
5. Do not drop the device or any abuse treatment.
6. If the consumption parts (e.g. panel, buttons, strap, free loops, buckles, and seals) are damaged by misuse, hit, scratch, and affect the normal operation on GW-60. Contacting your local LOCOSYS-authorized dealer for a repair service. The repair will hold a charge, and price depends on the inspections. The dealer will provide a quote before you return the watch to LOCOSYS. LOCOSYS will view the condition and advise dealer the repair assessment.

(Note: Before repairing your GW-60, LOCOSYS will charge the inspection fee in advance.)

7. Do not try to open the device, or it may cause your watch lose waterproof capability.
8. If the device hasn't been used for a long time or months, do not forget to charge your watch periodically for maintaining the battery lifetime.
9. To download the latest firmware version for GW-60, visit our website for "Download page" www.locosystech.com

Section 7. Warranty & Return Information

◆ **Warranty Coverage**

1. GW-60 is warranted for 12 months and warranty coverage is effective from the date of purchases. *(Note: Some areas may extend to 24 months)*
2. LOCOSYS warrants our products and its parts against defects in material and workmanship under normal use within the warranty period.
3. The warranty does not cover any product where damage has been caused by accident, abuse, misuse, natural disaster, any unauthorized disassembles, or modification.
(Note: LOCOSYS will repair it for free, and customers will pay the inbound shipping cost.)
4. For warranty returns, the product "MUST" be returned by LOCOSYS authorized dealers.
5. Before shipping a returned product to LOCOSYS, dealers shall inform LOCOSYS and apply the RMA (Return Merchandise Authorization) request form.

◆ **Out-of-Warranty Service**

1. Out-of-warranty products, or damage condition not be covered under the warranty will be charged to the customer. If the product fails forgoing conditions, we can usually repair it for a very reasonable price. We'll provide a quote including shipping charge for repair. *(Note: Repairs will be performed upon the receipt of payment.)*
2. Customers will prepay for shipping both ways, plus parts and labor.

◆ **Where to get help**

1. Local dealers support

Contact the LOCOSYS-authorized dealers to reach a support service, or repair service to return the damaged device to LOCOSYS.

2. Website support

Visit LOCOSYS website www.locosystech.com for firmware update, and trouble-shooting information. You can e-mail LOCOSYS to get tips, usage information, and FAQs, download utilities.

**Life is a wave,
go catch it!**

V1.3 2018 AUG.